

\$35,000 - 5218 Imperial Lane, Coronation

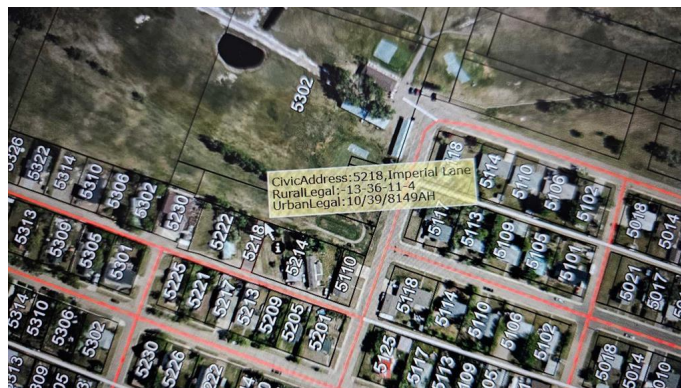
MLS® #A2165464

\$35,000

0 Bedroom, 0.00 Bathroom,
Land on 0.20 Acres

NONE, Coronation, Alberta

Large lot in Coronation, backs onto Coronation Golf Course, three -25 ft lots-9-11, to be added onto existing title 0015720087, empty lots 12-15 to the west have not been developed are for sale also @ \$55000- 5222 Imperial Lane, Linc#0036583757.



Essential Information

MLS® #	A2165464
Price	\$35,000
Bathrooms	0.00
Acres	0.20
Type	Land
Sub-Type	Residential Land
Status	Active

Community Information

Address	5218 Imperial Lane
Subdivision	NONE
City	Coronation
County	Paintearth No. 18, County of
Province	Alberta
Postal Code	T0C1C0

Exterior

Lot Description No Neighbours Behind, On Golf Course

Additional Information

Date Listed September 12th, 2024

Days on Market 222

Zoning R1

Listing Details

Listing Office Sutton Landmark Realty

Data is supplied by Pillar 9â„¢ MLSÂ® System. Pillar 9â„¢ is the owner of the copyright in its MLSÂ® System. Data is deemed reliable but is not guaranteed accurate by Pillar 9â„¢. The trademarks MLSÂ®, Multiple Listing ServiceÂ® and the associated logos are owned by The Canadian Real Estate Association (CREA) and identify the quality of services provided by real estate professionals who are members of CREA. Used under license.