

\$2,500,000 - 2825 Walsh Drive W, Lethbridge

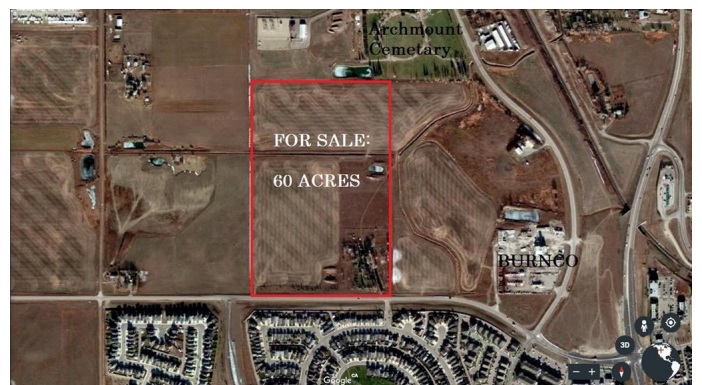
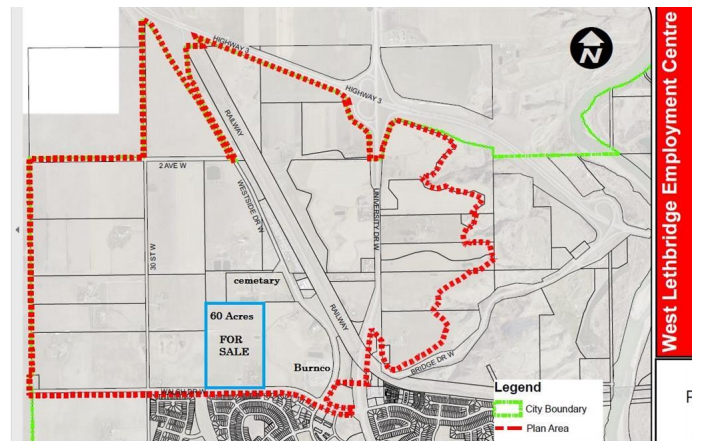
MLS® #A2189925

\$2,500,000

0 Bedroom, 0.00 Bathroom,
Land on 60.00 Acres

West Lethbridge Employment Centre -
Commercial, Lethbridge, Alberta

Investors, Developers, Interested parties! Do not sleep on this parcel. Located in the future West Lethbridge Employment Center district, this prime 60 Acres is up for SALE! As the property currently sits, it is being used as a rural residence. There is a sprawling bungalow (home needs TLC) located on the land as well as a functional pool for endless summer enjoyment, as well as some out buildings and more. The real value of this property though is in its future use and designation of Business Industrial (see p. 28 of the WLEC PDF). As stated in the document, "Land uses that are considered appropriate for this area include offices, business support services, vehicle sales and rentals, storage, and household repair services. This is similar to what is currently seen in the W.T Hill Business park on the east side of the city." (Casino area). For further information please contact your favourite realtor!



Essential Information

| | |
|-----------|-----------------|
| MLS® # | A2189925 |
| Price | \$2,500,000 |
| Bathrooms | 0.00 |
| Acres | 60.00 |
| Type | Land |
| Sub-Type | Industrial Land |
| Status | Active |

Community Information

| | |
|-------------|--|
| Address | 2825 Walsh Drive W |
| Subdivision | West Lethbridge Employment Centre - Commercial |
| City | Lethbridge |
| County | Lethbridge |
| Province | Alberta |
| Postal Code | T1J5A9 |

Additional Information

| | |
|----------------|--------------------|
| Date Listed | January 23rd, 2025 |
| Days on Market | 90 |
| Zoning | FUD |

Listing Details

| | |
|----------------|-------------------------------------|
| Listing Office | Maxwell Capital Realty - Lethbridge |
|----------------|-------------------------------------|

Data is supplied by Pillar 9â„¢ MLSÂ® System. Pillar 9â„¢ is the owner of the copyright in its MLSÂ® System. Data is deemed reliable but is not guaranteed accurate by Pillar 9â„¢. The trademarks MLSÂ®, Multiple Listing ServiceÂ® and the associated logos are owned by The Canadian Real Estate Association (CREA) and identify the quality of services provided by real estate professionals who are members of CREA. Used under license.