

\$928,000 - 3725 Richmond Road Sw, Calgary

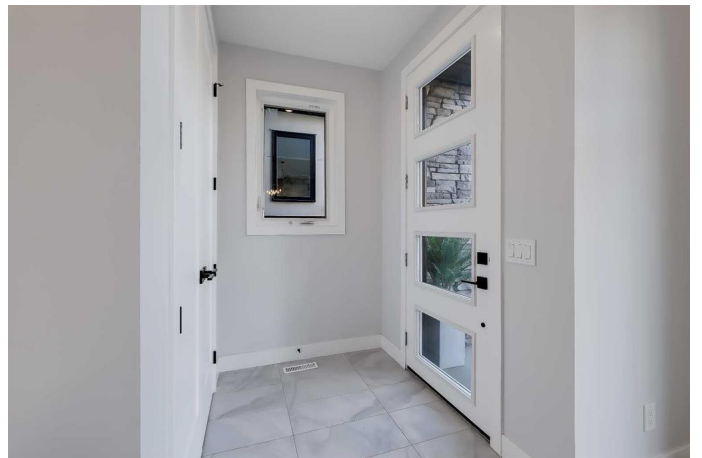
MLS® #A2191545

\$928,000

4 Bedroom, 4.00 Bathroom, 1,893 sqft
Residential on 0.07 Acres

Rutland Park, Calgary, Alberta

***AMAZING NEW PRICE* + \$2500 BUYER BONUS in Upgrades | Experience elevated living in THIS NEWLY CONSTRUCTED FARMHOUSE-STYLE DUPLEX, located in the sought-after community of RUTLAND PARK!** This 4-bedroom, 3.5-bath home is designed for those who appreciate luxury and detail in every corner. Step inside to find a dramatic powder room with a bold feature wall and a contemporary black vessel sink, setting the tone for the home's stylish finishes. The open-concept main floor features a state-of-the-art kitchen equipped with high-end stainless steel appliances, an expansive island with a waterfall quartz countertop, and unique floating wood shelves that add warmth to the sleek design. The living room, complete with a full-height marble-style tile fireplace and custom built-ins, is an inviting space for cozy gatherings and everyday comfort. The upper level is a private retreat, highlighted by a spacious primary suite with vaulted ceilings, a custom-organized walk-in closet, and a spa-like ensuite. Enjoy a freestanding soaking tub, floor-to-ceiling designer tile, a glass-enclosed shower with rain showerhead, and dual sinks, creating a luxurious escape within your home. The second floor also includes two additional bedrooms, a 4-piece bathroom with designer fixtures, and a laundry room for ultimate convenience. The fully developed basement extends the home's living space, featuring a large rec room complete with a built-in wet bar, making it ideal



for entertaining or movie nights. An additional bedroom and full bath provide privacy and flexibility for guests or a home office.

Outdoors, the private patio and fenced yard offer a tranquil space for relaxation or dining in the summer. Additional features of this stunning home include hardwood flooring throughout, 9-ft ceilings, rough-ins for AC and security cameras, and an EV-ready garage. Nestled in Rutland Park, this home is just moments away from top schools, lush parks, Mount Royal University, trendy dining, shopping, and fitness amenities. Enjoy easy access to downtown Calgary and major roadways, perfectly balancing urban convenience with neighbourhood charm. Book your private tour today to experience this exceptional property!

Built in 2024

Essential Information

MLS® #	A2191545
Price	\$928,000
Bedrooms	4
Bathrooms	4.00
Full Baths	3
Half Baths	1
Square Footage	1,893
Acres	0.07
Year Built	2024
Type	Residential
Sub-Type	Semi Detached
Style	2 Storey, Side by Side
Status	Active

Community Information

Address	3725 Richmond Road Sw
Subdivision	Rutland Park
City	Calgary

County	Calgary
Province	Alberta
Postal Code	T3E 4P1

Amenities

Parking Spaces	2
Parking	Double Garage Detached
# of Garages	2

Interior

Interior Features	Built-in Features, Chandelier, Closet Organizers, Double Vanity, Kitchen Island, Open Floorplan, Quartz Counters, Recessed Lighting, Vaulted Ceiling(s), Wet Bar
Appliances	Bar Fridge, Built-In Oven, Dishwasher, Dryer, Garage Control(s), Gas Cooktop, Microwave, Range Hood, Washer
Heating	Forced Air
Cooling	Rough-In
Fireplace	Yes
# of Fireplaces	1
Fireplaces	Gas
Has Basement	Yes
Basement	Finished, Full

Exterior

Exterior Features	BBQ gas line, Private Yard
Lot Description	Back Yard, Low Maintenance Landscape, Rectangular Lot
Roof	Asphalt Shingle
Construction	Concrete, Stucco, Wood Frame
Foundation	Poured Concrete

Additional Information

Date Listed	January 31st, 2025
Days on Market	71
Zoning	R-C2

Listing Details

Listing Office	RE/MAX House of Real Estate
----------------	-----------------------------

Data is supplied by Pillar 9â„¢ MLSÂ® System. Pillar 9â„¢ is the owner of the copyright in its MLSÂ® System. Data is deemed reliable but is not guaranteed accurate by Pillar 9â„¢. The trademarks MLSÂ®, Multiple Listing ServiceÂ® and the associated logos are owned by The Canadian Real Estate Association (CREA) and identify the quality of services

provided by real estate professionals who are members of CREA. Used under license.