

\$780,000 - 80 Sceptre Close Nw, Calgary

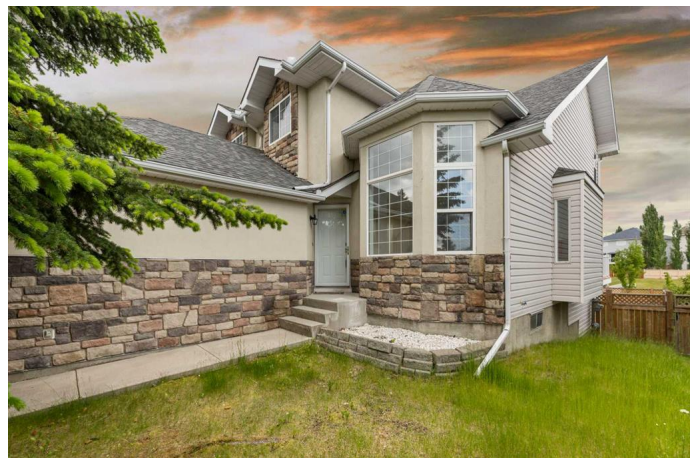
MLS® #A2191660

\$780,000

4 Bedroom, 4.00 Bathroom, 2,096 sqft
Residential on 0.01 Acres

Scenic Acres, Calgary, Alberta

COMPLETELY RENOVATED | NEW KITCHEN | NEW FLOORS | 4 BEDROOM | 3.5 BATHROOMS | HIGH CEILINGS | DOUBLE GARAGE | WALK-OUT BASEMENT | GEM COMMUNITY | QUARTZ COUNTER TOPS | BIG BACKYARD! - Welcome to this beautiful, fully renovated two-storey home with modern finishes, boasting 3,140.62 sq. ft. of living space, a FULLY FINISHED WALKOUT BASEMENT, and a DOUBLE ATTACHED GARAGE, this home is perfect for families looking for style, comfort, and convenience. Step inside to find a thoughtfully designed main floor with high ceilings and modern touches. The layout includes a spacious living and dining room, a cozy family room with a fireplace, a DEN/OFFICE room for added flexibility, and A BRAND-NEW KITCHEN featuring sleek quartz countertops, modern cabinetry. Appliances are (negotiable). Upstairs, you'll find 3 SPACIOUS BEDROOMS, including an OVERSIZED MASTER RETREAT with a luxurious 5-piece ensuite and a walk-in closet. TWO ADDITIONAL SPACIOUS BEDROOMS and a 4-piece bathroom complete the upper level, offering ample space for family living. THE FULLY FINISHED WALKOUT BASEMENT is a fantastic extension of the home, featuring a recreation room with a WET BAR, a full bathroom, and an additional bedroom—ideal for guests or extended family. This home is perfectly situated near schools, parks, shopping, and transit, with access to beautiful



ravines and trails that enhance the community's appeal. As well as easy access to SHOPPING AT CROWFOOT PLAZA and transit via the nearby CROWFOOT C-TRAIN STATION. Commuting is a breeze with convenient proximity to Stoney Trail and Crowchild Trail. Don't miss the chance to own this SCENIC ACRES GEM!

Built in 1994

Essential Information

MLS® #	A2191660
Price	\$780,000
Bedrooms	4
Bathrooms	4.00
Full Baths	3
Half Baths	1
Square Footage	2,096
Acres	0.01
Year Built	1994
Type	Residential
Sub-Type	Detached
Style	2 Storey
Status	Active

Community Information

Address	80 Sceptre Close Nw
Subdivision	Scenic Acres
City	Calgary
County	Calgary
Province	Alberta
Postal Code	T3L1Y1

Amenities

Amenities	None
Parking Spaces	4
Parking	Concrete Driveway, Double Garage Attached, Front Drive, Garage Door Opener, Garage Faces Front

of Garages 2

Interior

Interior Features Built-in Features, High Ceilings, Kitchen Island, No Smoking Home, Quartz Counters, No Animal Home, Recessed Lighting, Wet Bar

Appliances See Remarks

Heating Forced Air, Natural Gas

Cooling None

Fireplace Yes

of Fireplaces 1

Fireplaces Gas, Decorative, Great Room

Has Basement Yes

Basement Exterior Entry, Finished, Full, Walk-Out

Exterior

Exterior Features Private Yard

Lot Description Irregular Lot, No Neighbours Behind, Open Lot

Roof Asphalt Shingle

Construction Stone, Stucco, Vinyl Siding, Wood Frame

Foundation Poured Concrete

Additional Information

Date Listed January 31st, 2025

Days on Market 41

Zoning R-CG

HOA Fees 60

HOA Fees Freq. ANN

Listing Details

Listing Office RE/MAX West Real Estate

Data is supplied by Pillar 9â,,ç MLSÂ® System. Pillar 9â,,ç is the owner of the copyright in its MLSÂ® System. Data is deemed reliable but is not guaranteed accurate by Pillar 9â,,ç. The trademarks MLSÂ®, Multiple Listing ServiceÂ® and the associated logos are owned by The Canadian Real Estate Association (CREA) and identify the quality of services provided by real estate professionals who are members of CREA. Used under license.