

\$20 - 1206, 100 Alpine Meadows, Canmore

MLS® #A2191725

\$20

0 Bedroom, 0.00 Bathroom,
Commercial on 1.50 Acres

Elk Run, Canmore, Alberta

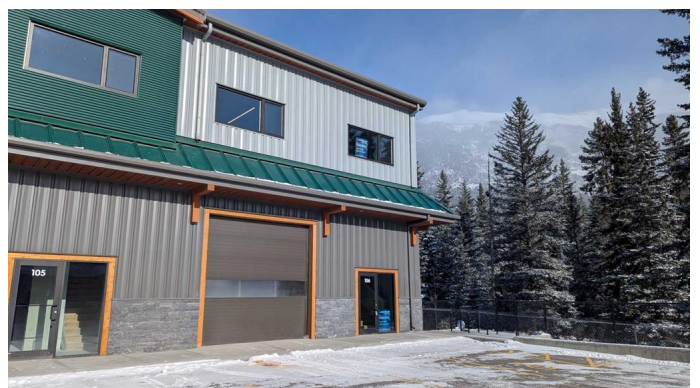
Elk Meadows is Canmore's newest warehouse development to showcase an updated Alpine architecture. With high exposure to Elk Run Boulevard and proximity to the Trans Canada Hwy it provides quick access to all parts of Canmore and surrounding areas. This building is well engineered using structural steel and concrete floors on two levels. The upper level of 2,372 sq ft has high 12'™ ceilings ideally suited for open space and active uses. 100A 208V power is metered separately along with a full sprinkler system throughout. The best feature of this end bay is the wrap around windows giving it an open concept layout and mountain views. This is a great opportunity for office, studios, retail, pubs, training centers and pet care. A tenant improvement allowance is negotiable, Available Immediately!

Built in 2024

Essential Information

MLS® #	A2191725
Price	\$20
Bathrooms	0.00
Acres	1.50
Year Built	2024
Type	Commercial
Sub-Type	Industrial
Status	Active

Community Information



Address	1206, 100 Alpine Meadows
Subdivision	Elk Run
City	Canmore
County	Bighorn No. 8, M.D. of
Province	Alberta
Postal Code	T1W 1L1

Amenities

Parking Spaces	53
----------------	----

Interior

Heating	Natural Gas
---------	-------------

Exterior

Lot Description	Level, Paved
Roof	Membrane
Construction	See Remarks
Foundation	Poured Concrete

Additional Information

Date Listed	February 1st, 2025
Days on Market	41
Zoning	IND-1

Listing Details

Listing Office	LB Hubbard Realty Group
----------------	-------------------------

Data is supplied by Pillar 9â„¢ MLSÂ® System. Pillar 9â„¢ is the owner of the copyright in its MLSÂ® System. Data is deemed reliable but is not guaranteed accurate by Pillar 9â„¢. The trademarks MLSÂ®, Multiple Listing ServiceÂ® and the associated logos are owned by The Canadian Real Estate Association (CREA) and identify the quality of services provided by real estate professionals who are members of CREA. Used under license.