

# \$219,900 - 901, 1330 15 Avenue Sw, Calgary

MLS® #A2197438

**\$219,900**

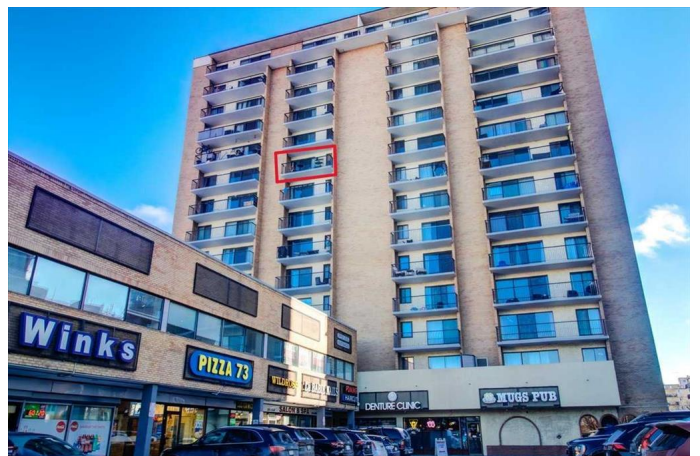
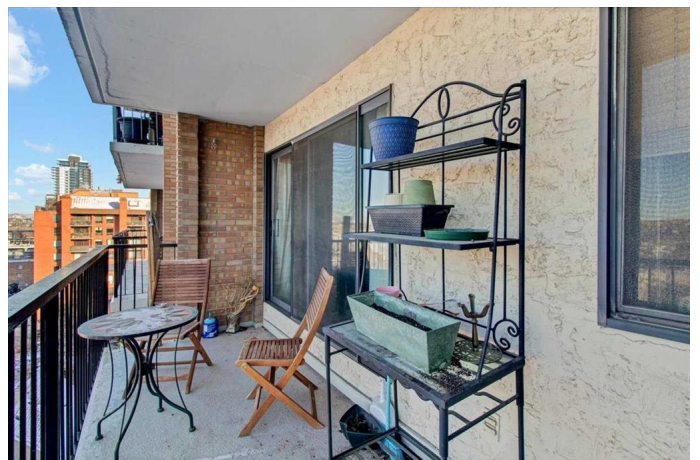
1 Bedroom, 1.00 Bathroom, 565 sqft  
Residential on 0.00 Acres

Beltline, Calgary, Alberta

Welcome to the heart of Wellington Estates. This great 9th-floor condo offers more than just a home; it offers the luxury lifestyle you ever dreamed of. Step inside to discover an inviting open floor plan flooded with natural light, thanks to expansive west facing windows that frame amazing unobstructed views. The spacious living area seamlessly flows into a large balcony, perfect for morning coffee or entertaining guests.

As soon as you enter the unit you will be greeted by a hallway and a good size closet space. On your right is a spacious kitchen with stainless steel dishwasher and stove, a microwave and a fridge. The expansive countertops go all along to the dining area. The master bedroom provides ample space for a home office, while ensuite laundry adds practicality to modern living.

Indulge in the luxury of heated underground parking, ensuring your vehicle is sheltered year-round. Plus, with storage for bikes and tires, you can explore the city at your leisure. Location is key, and this residence does not disappoint. Situated within walking distance of Kensington, river pathways, the downtown core, and trendy 17th Ave, every convenience at your doorstep. Discover amenities, from boutique shops to gourmet restaurants, and immerse yourself into enjoyable city living. Inside, a recent renovation elevates the space of elegance and functionality. Enjoy the peace and quiet of a well-maintained building with thick walls and considerate neighbors. Revel in



the convenience of walking everywhere, from bustling cafes to serene river pathways, all just moments from your doorstep. THE View from the 9th floor provides a daily reminder of the beauty that surrounds you. Make this 9th-floor retreat in Wellington Estates yours and embrace City living at its finest.

Built in 1973

### **Essential Information**

MLS® #	A2197438
Price	\$219,900
Bedrooms	1
Bathrooms	1.00
Full Baths	1
Square Footage	565
Acres	0.00
Year Built	1973
Type	Residential
Sub-Type	Apartment
Style	Single Level Unit
Status	Active

### **Community Information**

Address	901, 1330 15 Avenue Sw
Subdivision	Beltline
City	Calgary
County	Calgary
Province	Alberta
Postal Code	T2C3N7

### **Amenities**

Amenities	Elevator(s), Laundry, Parking, Coin Laundry
Parking Spaces	1
Parking	Assigned, Underground

### **Interior**

Interior Features	Open Floorplan, Laminate Counters
-------------------	-----------------------------------

Appliances	Dishwasher, Electric Stove, Refrigerator, Washer/Dryer
Heating	Baseboard
Cooling	None, Other
# of Stories	15

### **Exterior**

Exterior Features	Balcony, Other
Construction	Brick, Concrete

### **Additional Information**

Date Listed	February 26th, 2025
Days on Market	14
Zoning	CC-COR

### **Listing Details**

Listing Office	Real Broker
----------------	-------------

Data is supplied by Pillar 9â„¢ MLSÂ® System. Pillar 9â„¢ is the owner of the copyright in its MLSÂ® System. Data is deemed reliable but is not guaranteed accurate by Pillar 9â„¢. The trademarks MLSÂ®, Multiple Listing ServiceÂ® and the associated logos are owned by The Canadian Real Estate Association (CREA) and identify the quality of services provided by real estate professionals who are members of CREA. Used under license.