

# \$110,000 - 80573 Hwy 2, Rural Northern Sunrise County

MLS® #A2199916

**\$110,000**

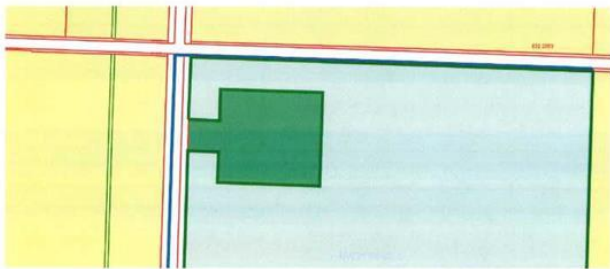
0 Bedroom, 0.00 Bathroom,  
Land on 10.01 Acres

NONE, Rural Northern Sunrise County,  
Alberta

Looking for the perfect acreage to build your dream home or invest in? This 10-acre parcel offers endless possibilities! Located in a desirable area, the property comes with established services, including power, water, and gas, providing a huge advantage for future development.

A tear-down home is currently on-site, offering the potential to start fresh with your vision. Whether you're looking for a private homestead, a recreational retreat, or future development potential, this land provides a great foundation. This is a rare chance to secure an acreage with services already installed, saving you time and money.

Don't miss out—bring your plans and make it yours



## Essential Information

MLS® #	A2199916
Price	\$110,000
Bathrooms	0.00
Acres	10.01
Type	Land
Sub-Type	Residential Land
Status	Active

## Community Information

Address	80573 Hwy 2
---------	-------------

Subdivision	NONE
City	Rural Northern Sunrise County
County	Northern Sunrise County
Province	Alberta
Postal Code	T0H 2R0

### **Additional Information**

Date Listed	March 4th, 2025
Days on Market	47
Zoning	CR1

### **Listing Details**

Listing Office	RE/MAX Northern Realty
----------------	------------------------

Data is supplied by Pillar 9â„¢ MLS® System. Pillar 9â„¢ is the owner of the copyright in its MLS® System. Data is deemed reliable but is not guaranteed accurate by Pillar 9â„¢. The trademarks MLS®, Multiple Listing Service® and the associated logos are owned by The Canadian Real Estate Association (CREA) and identify the quality of services provided by real estate professionals who are members of CREA. Used under license.