

\$579,900 - 303 Chelsea Parade, Chestermere

MLS® #A2200393

\$579,900

3 Bedroom, 3.00 Bathroom, 1,567 sqft
Residential on 0.06 Acres

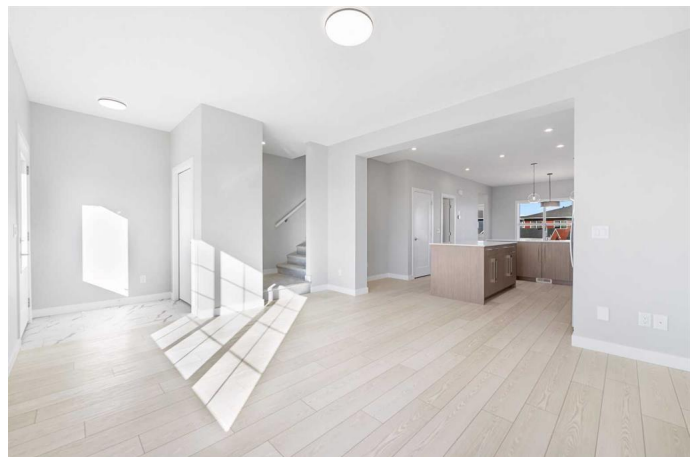
Chelsea_CH, Chestermere, Alberta

Open House Saturday, March 22nd from 2pm to 4pm Welcome to your MOVE-IN READY dream home in Chelsea, Chestermere's newest and most sought after Master Planned community. This stunning END UNIT TOWNHOME offers modern design, functional living space, and best of all, NO CONDO FEES giving you the freedom of full ownership.

Step inside and experience a thoughtfully designed layout with three spacious bedrooms and a versatile BONUS ROOM upstairs, perfect for a home office, playroom, or cozy lounge area. The primary suite is a true retreat, featuring a walk-in closet and a beautifully designed ensuite with double vanities for added comfort and convenience.

The heart of the home is the stylish and contemporary kitchen, complete with sleek quartz countertops, stainless steel appliances, and an OPEN CONCEPT layout designed for both everyday living and entertaining. Large windows bring in plenty of natural light, creating a bright and welcoming atmosphere throughout the home.

The unfinished basement with 2 Egress Windows provides a blank canvas, offering endless possibilities to create two more bedrooms or a space that suits your needs, whether it be a home gym, media room, or additional living space. Outside, the backyard



is perfect for relaxing or hosting gatherings, and the detached double garage is scheduled to be completed by the builder.

Located in a vibrant and growing community, this townhome is approximately 7 minutes away to the Lake and Golf Course, close to parks, pathways, shopping, and schools, with easy access to major routes for a quick commute to Calgary. With its prime location, modern finishes, and opportunity for customization, this home is a must-see. Book your showing today!

Built in 2025

Essential Information

| | |
|----------------|---------------|
| MLS® # | A2200393 |
| Price | \$579,900 |
| Bedrooms | 3 |
| Bathrooms | 3.00 |
| Full Baths | 2 |
| Half Baths | 1 |
| Square Footage | 1,567 |
| Acres | 0.06 |
| Year Built | 2025 |
| Type | Residential |
| Sub-Type | Row/Townhouse |
| Style | 2 Storey |
| Status | Active |

Community Information

| | |
|-------------|--------------------|
| Address | 303 Chelsea Parade |
| Subdivision | Chelsea_CH |
| City | Chestermere |
| County | Chestermere |
| Province | Alberta |
| Postal Code | T1X 2V5 |

Amenities

| | |
|----------------|------------------------|
| Parking Spaces | 2 |
| Parking | Double Garage Detached |
| # of Garages | 2 |

Interior

| | |
|-------------------|---|
| Interior Features | Kitchen Island, No Animal Home, No Smoking Home, Open Floorplan, Pantry, Quartz Counters, Walk-In Closet(s) |
| Appliances | Dishwasher, Electric Stove, Microwave Hood Fan, Refrigerator, Washer/Dryer Stacked |
| Heating | Forced Air |
| Cooling | None |
| Has Basement | Yes |
| Basement | Full, Unfinished |

Exterior

| | |
|-------------------|--------------------------------|
| Exterior Features | Private Entrance, Private Yard |
| Lot Description | Back Yard, Rectangular Lot |
| Roof | Asphalt Shingle |
| Construction | Vinyl Siding |
| Foundation | Poured Concrete |

Additional Information

| | |
|----------------|-----------------|
| Date Listed | March 7th, 2025 |
| Days on Market | 27 |
| Zoning | R-3 |

Listing Details

| | |
|----------------|--------------------------------|
| Listing Office | Real Estate Professionals Inc. |
|----------------|--------------------------------|

Data is supplied by Pillar 9â„¢ MLSÂ® System. Pillar 9â„¢ is the owner of the copyright in its MLSÂ® System. Data is deemed reliable but is not guaranteed accurate by Pillar 9â„¢. The trademarks MLSÂ®, Multiple Listing ServiceÂ® and the associated logos are owned by The Canadian Real Estate Association (CREA) and identify the quality of services provided by real estate professionals who are members of CREA. Used under license.