

\$1,299,900 - 2825 Parkside Drive S, Lethbridge

MLS® #A2207400

\$1,299,900

3 Bedroom, 2.00 Bathroom, 2,644 sqft

Residential on 0.20 Acres

Henderson Lake, Lethbridge, Alberta

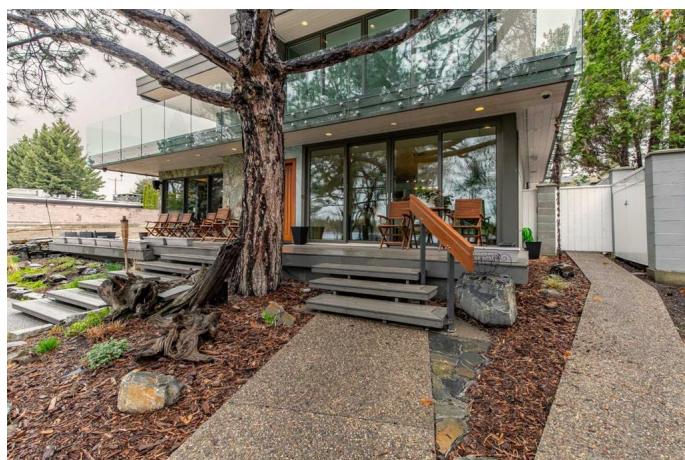
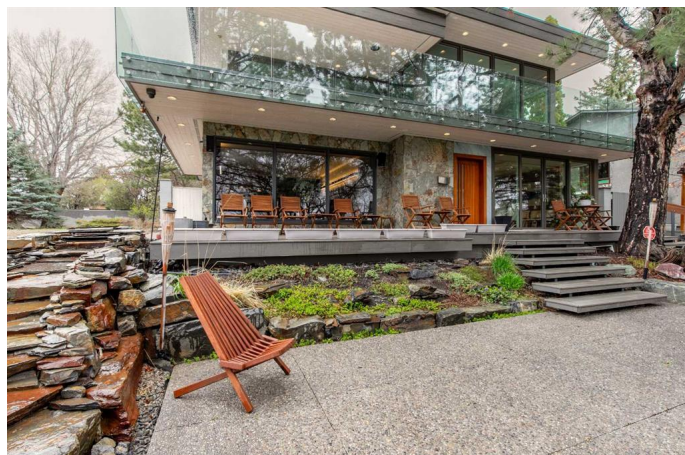
This stunning 4-level split home boasts a modern design with sliding doors opening the dining area to the outdoors. Enjoy a kitchen with a minimal, modular, straight-lined work area emphasizing efficiency and cleanliness. Large south-facing windows provide natural light and gorgeous views overlooking Henderson Lake. The double garage features an EV charger and a heated driveway. Upstairs, you'll find an office set up or hosting area, while a large patio awaits for city festivities by the lake. Please contact your REALTOR® to book a showing on this luxurious and functional home.

Built in 1958

Essential Information

MLS® #	A2207400
Price	\$1,299,900
Bedrooms	3
Bathrooms	2.00
Full Baths	2
Square Footage	2,644
Acres	0.20
Year Built	1958
Type	Residential
Sub-Type	Detached
Style	4 Level Split
Status	Active

Community Information



Address	2825 Parkside Drive S
Subdivision	Henderson Lake
City	Lethbridge
County	Lethbridge
Province	Alberta
Postal Code	T1J 1M8

Amenities

Parking Spaces	4
Parking	Double Garage Attached, Driveway, Covered, Electric Gate, In Garage Electric Vehicle Charging Station(s), Gated, Garage Door Opener, Insulated
# of Garages	4

Interior

Interior Features	Built-in Features, No Animal Home, No Smoking Home, Open Floorplan, Pantry, Stone Counters, Storage, Wired for Sound, Sump Pump(s)
Appliances	Central Air Conditioner, Dishwasher, Dryer, Garage Control(s), Garburator, Humidifier, Washer/Dryer, Bar Fridge, Built-In Freezer, Built-In Gas Range, Double Oven
Heating	Fireplace(s), Natural Gas, Central
Cooling	Central Air
Fireplace	Yes
# of Fireplaces	2
Fireplaces	Basement, Electric, Living Room
Has Basement	Yes
Basement	Finished, Full

Exterior

Exterior Features	Balcony, Garden, Lighting, Private Yard
Lot Description	Back Lane, Back Yard, Backs on to Park/Green Space, Front Yard, Garden, Landscaped, Lawn, City Lot, Fruit Trees/Shrub(s), Lake, Treed, Waterfall
Roof	Flat Torch Membrane
Construction	Stone
Foundation	Poured Concrete, Piling(s)

Additional Information

Date Listed	April 4th, 2025
Days on Market	17

Zoning R-L

Listing Details

Listing Office REAL BROKER

Data is supplied by Pillar 9â„¢ MLS® System. Pillar 9â„¢ is the owner of the copyright in its MLS® System. Data is deemed reliable but is not guaranteed accurate by Pillar 9â„¢. The trademarks MLS®, Multiple Listing Service® and the associated logos are owned by The Canadian Real Estate Association (CREA) and identify the quality of services provided by real estate professionals who are members of CREA. Used under license.