

# \$289,900 - 168 Belgian Green, Fort McMurray

MLS® #A2208516

**\$289,900**

2 Bedroom, 2.00 Bathroom, 1,216 sqft

Residential on 0.10 Acres

Prairie Creek, Fort McMurray, Alberta

This beautifully upgraded manufactured home is truly one-of-a-kind. Key updates include new windows, siding, shingles, and insulation.

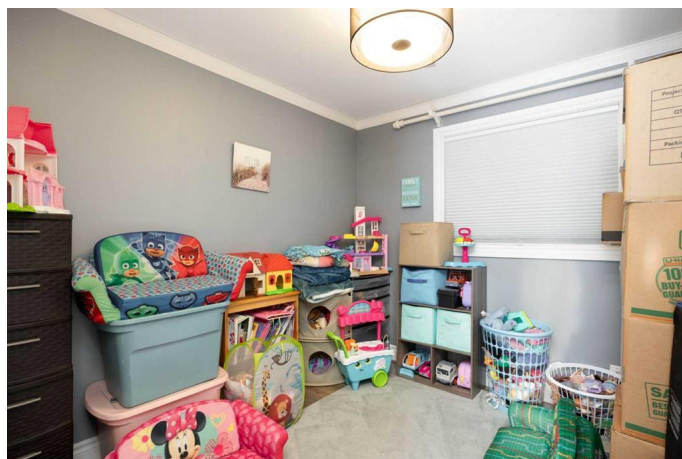
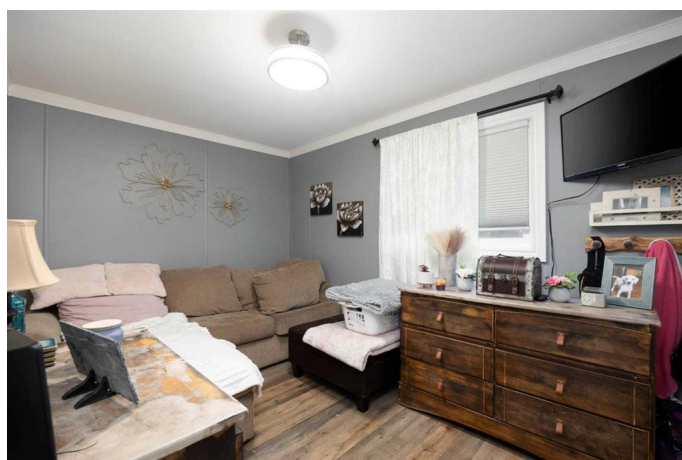
Inside, youâ€™ll find modern touches like new flooring, stylish lighting, and granite countertops. The living room features a stunning quartz wall with a glass fireplace. The home offers 3 bedrooms, including a primary suite with a spa-like shower. The designer kitchen is a highlight, complete with air conditioning and hot water on demand. Outside, enjoy the spacious 11x19 deck and backyard fire pit. This home is a must-see!

Built in 2002

## Essential Information

MLS® #	A2208516
Price	\$289,900
Bedrooms	2
Bathrooms	2.00
Full Baths	2
Square Footage	1,216
Acres	0.10
Year Built	2002
Type	Residential
Sub-Type	Detached
Style	Single Wide Mobile Home
Status	Active

## Community Information



Address	168 Belgian Green
Subdivision	Prairie Creek
City	Fort McMurray
County	Wood Buffalo
Province	Alberta
Postal Code	T9H5M7

### **Amenities**

Parking Spaces	3
Parking	Off Street

### **Interior**

Interior Features	See Remarks
Appliances	Central Air Conditioner, Dishwasher, Electric Stove, Refrigerator, Tankless Water Heater, Washer/Dryer
Heating	Forced Air
Cooling	Central Air
Fireplace	Yes
# of Fireplaces	1
Fireplaces	Electric
Basement	None

### **Exterior**

Exterior Features	None
Lot Description	Other
Roof	Asphalt Shingle
Construction	Vinyl Siding, Wood Frame
Foundation	Other

### **Additional Information**

Date Listed	April 3rd, 2025
Days on Market	19
Zoning	RMH

### **Listing Details**

Listing Office	RE/MAX Connect
----------------	----------------

Data is supplied by Pillar 9â„¢ MLSÂ® System. Pillar 9â„¢ is the owner of the copyright in its MLSÂ® System. Data is deemed reliable but is not guaranteed accurate by Pillar 9â„¢. The trademarks MLSÂ®, Multiple Listing ServiceÂ® and the associated logos are owned by The Canadian Real Estate Association (CREA) and identify the quality of services provided by real estate professionals who are members of CREA. Used under license.