

\$914,000 - 142 Topaz Gate, Chestermere

MLS® #A2212498

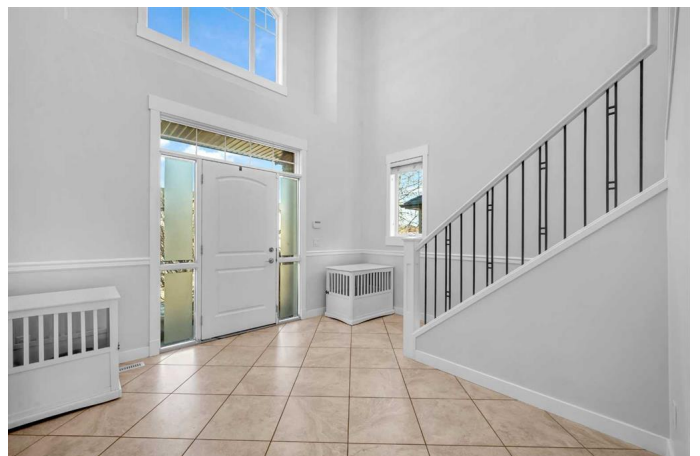
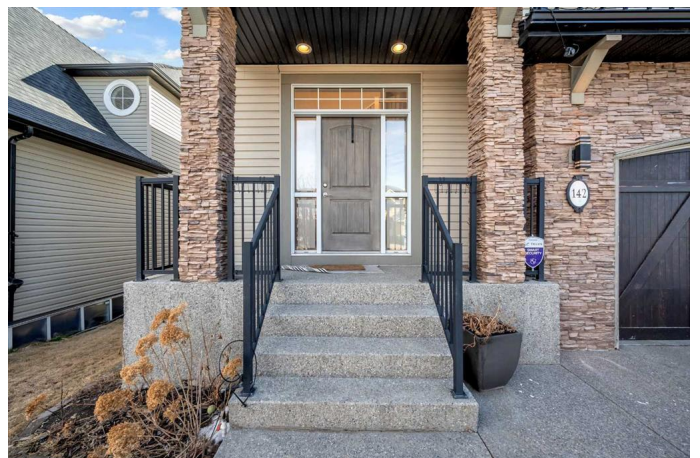
\$914,000

4 Bedroom, 4.00 Bathroom, 2,927 sqft

Residential on 0.12 Acres

Rainbow Falls, Chestermere, Alberta

This stunning former showhome by Truman Homes, located in the desirable Rainbow Falls community of Chestermere, offers 2,927 sq. ft. of bright, open living space. The home features soaring ceilings in the entry foyer, family room, and upstairs bonus room, creating an airy, inviting atmosphere. As you enter, youâ€™re greeted by a beautiful Restoration Hardware chandelier. Down the hall, youâ€™ll find an intimate powder room. There is a home office, perfect for students or anyone working from home. The chef-inspired kitchen includes a Brigade 6-burner stove, Miele oven, Miele steam oven, and an oversized island with a built-in microwaveâ€”perfect for cooking and entertaining. The kitchen leads to a massive balcony, complete with a natural gas line, which overlooks the south-facing backyard that backs onto green space, providing both privacy and an abundance of natural light. A walk-through pantry connects to a mudroom with laundry facilities and access to the finished garage with organized wall storage. Upstairs, youâ€™ll find three spacious bedrooms, including a master suite with its own private balcony and a luxurious 5-piece ensuite with a jetted tub. Thereâ€™s also a massive family room with vaulted ceilings and bright windows that flood the space with natural light, creating a spacious, inviting atmosphere. The fully finished basement features a walkout to a large backyard, a small kitchen, and a bright sitting area with



south-facing windows, as well as a home gym. With built-in ceiling speakers, central vacuum, and a prime location close to parks, schools, shopping, and Chestermere Lake, this home offers both luxury and convenience. Donâ€™t miss your chance to see this exceptional propertyâ€”book your showing today!

Built in 2009

Essential Information

MLS® #	A2212498
Price	\$914,000
Bedrooms	4
Bathrooms	4.00
Full Baths	3
Half Baths	1
Square Footage	2,927
Acres	0.12
Year Built	2009
Type	Residential
Sub-Type	Detached
Style	2 Storey
Status	Active

Community Information

Address	142 Topaz Gate
Subdivision	Rainbow Falls
City	Chestermere
County	Chestermere
Province	Alberta
Postal Code	T1X0B1

Amenities

Parking Spaces	4
Parking	Double Garage Attached, Garage Door Opener, Garage Faces Front
# of Garages	2

Interior

Interior Features	Built-in Features, Ceiling Fan(s), Central Vacuum, Chandelier, Double Vanity, Granite Counters, High Ceilings, No Smoking Home, Pantry, Separate Entrance, Walk-In Closet(s), Wet Bar, Wired for Sound
Appliances	Built-In Gas Range, Built-In Oven, Dishwasher, Garage Control(s), Microwave, Range Hood, Refrigerator, Washer/Dryer
Heating	Forced Air
Cooling	None
Fireplace	Yes
# of Fireplaces	2
Fireplaces	Gas
Has Basement	Yes
Basement	Finished, Full, Walk-Out

Exterior

Exterior Features	Balcony, Private Yard, Storage
Lot Description	Back Lane, Back Yard, Backs on to Park/Green Space, Few Trees, Landscaped, No Neighbours Behind, Private, Street Lighting
Roof	Asphalt Shingle
Construction	Stone, Wood Frame
Foundation	Poured Concrete

Additional Information

Date Listed	April 18th, 2025
Days on Market	2
Zoning	R-1

Listing Details

Listing Office	Century 21 Bravo Realty
----------------	-------------------------

Data is supplied by Pillar 9â„¢ MLSÂ® System. Pillar 9â„¢ is the owner of the copyright in its MLSÂ® System. Data is deemed reliable but is not guaranteed accurate by Pillar 9â„¢. The trademarks MLSÂ®, Multiple Listing ServiceÂ® and the associated logos are owned by The Canadian Real Estate Association (CREA) and identify the quality of services provided by real estate professionals who are members of CREA. Used under license.