

# \$660,000 - 21 Riverford Close W, Lethbridge

MLS® #A2212616

**\$660,000**

5 Bedroom, 3.00 Bathroom, 1,666 sqft

Residential on 0.11 Acres

Riverstone, Lethbridge, Alberta

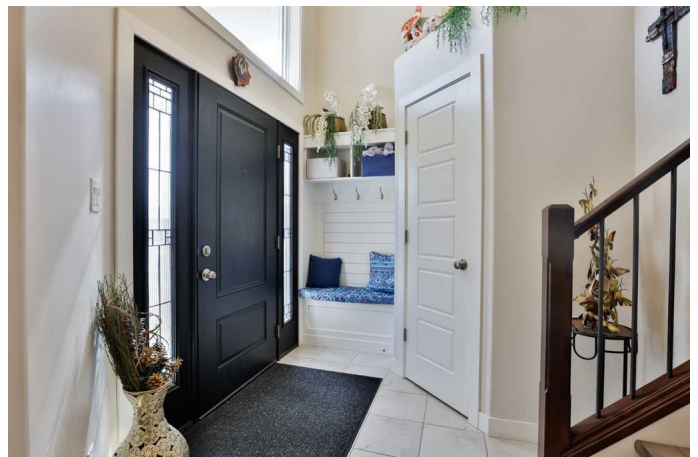
Welcome to 21 Riverford Close! This amazing bi-level is perfect for a growing family and has plenty to offer. The main level features a fantastic Kitchen (with a gas stove), a huge Dining Area, and a Living Room that features big windows, a fireplace and built-in shelving. Also on the main level is your huge Primary Suite. Boasting a massive walk-in closet as well as a dual-vanity, five-piece Ensuite. The main-floor Laundry completes the level. The upper level has a spacious landing area, two large Bedrooms and a four-piece bath. The lower level is amazing, with 9 ft. ceilings, two huge Bedrooms (both with walk-in closets), a four-piece Bathroom and a great Family Room that has an additional fireplace. The Utility room features an abundant amount of storage. The Garage is nearly 27ft. deep so fitting a large vehicle should be no problem. As well, the Garage is insulated, drywalled and painted. Located in quiet close in Riverstone, there is minimal traffic providing a serene living environment. Located just a stones throw to the dog park, you have access to the parks and trail systems that make Riverstone so desirable.

Built in 2017

## Essential Information

MLS® #                   A2212616

Price                     \$660,000



|                |             |
|----------------|-------------|
| Bedrooms       | 5           |
| Bathrooms      | 3.00        |
| Full Baths     | 3           |
| Square Footage | 1,666       |
| Acres          | 0.11        |
| Year Built     | 2017        |
| Type           | Residential |
| Sub-Type       | Detached    |
| Style          | Bi-Level    |
| Status         | Active      |

### **Community Information**

|             |                      |
|-------------|----------------------|
| Address     | 21 Riverford Close W |
| Subdivision | Riverstone           |
| City        | Lethbridge           |
| County      | Lethbridge           |
| Province    | Alberta              |
| Postal Code | T1K 8E5              |

### **Amenities**

|                |   |
|----------------|---|
| Parking Spaces | 4   |
| Parking        | Concrete Driveway, Double Garage Attached, Insulated, See Remarks |
| # of Garages   | 2   |

### **Interior**

|                   |   |
|-------------------|---|
| Interior Features | Built-in Features, Kitchen Island, Pantry, See Remarks, Storage, Sump Pump(s), Walk-In Closet(s), Wet Bar   |
| Appliances        | Bar Fridge, Central Air Conditioner, Dishwasher, Dryer, Gas Stove, Microwave Hood Fan, Refrigerator, Washer |
| Heating           | Forced Air  |
| Cooling           | Central Air   |
| Fireplace         | Yes   |
| # of Fireplaces   | 2   |
| Fireplaces        | Family Room, Gas, Living Room   |
| Has Basement      | Yes   |
| Basement          | Finished, Full  |

### **Exterior**

|                   |      |
|-------------------|------|
| Exterior Features | None |
|-------------------|------|

|                 |                          |
|-----------------|--------------------------|
| Lot Description | Landscaped, Lawn         |
| Roof            | Asphalt Shingle          |
| Construction    | Vinyl Siding, Wood Frame |
| Foundation      | Poured Concrete          |

### **Additional Information**

|                |                  |
|----------------|------------------|
| Date Listed    | April 17th, 2025 |
| Days on Market | 3                |
| Zoning         | R-CL             |

### **Listing Details**

|                |  |
|----------------|--|
| Listing Office | Century 21 Foothills South Real Estate |
|----------------|--|

Data is supplied by Pillar 9â„¢ MLS® System. Pillar 9â„¢ is the owner of the copyright in its MLS® System. Data is deemed reliable but is not guaranteed accurate by Pillar 9â„¢. The trademarks MLS®, Multiple Listing Service® and the associated logos are owned by The Canadian Real Estate Association (CREA) and identify the quality of services provided by real estate professionals who are members of CREA. Used under license.