

# \$1,325,000 - 150 Saddlelake Grove Ne, Calgary

MLS® #A2212881

**\$1,325,000**

8 Bedroom, 6.00 Bathroom, 3,398 sqft

Residential on 0.12 Acres

Saddle Ridge, Calgary, Alberta

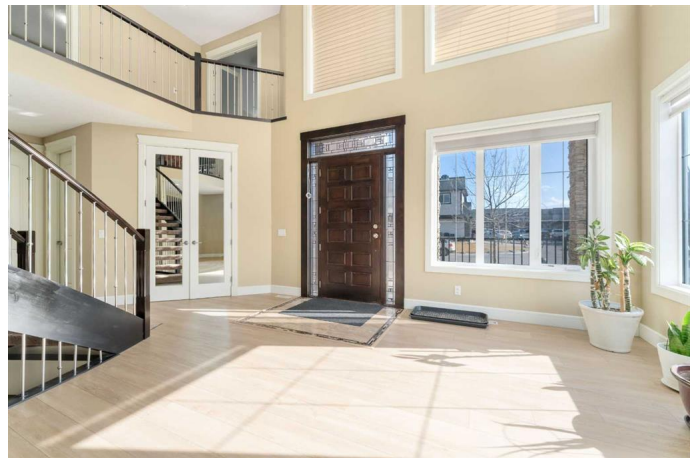
CORNER LOT| 2 BASEMENT SUITES (1 LEGAL & 1 ILLEGAL)| 2 PRIMARY BEDROOMS| MAIN FLOOR BED+BATH| SPICE KITCHEN|

Welcome to this beautifully maintained and spacious home located on a desirable corner lot in Saddleridge NE, conveniently located steps away from schools, shopping plazas, playgrounds, bus stoops and much more.

Featuring a striking stucco and brick exterior, this home combines style, space, and functionalityâ€”perfect for a growing family.

Step inside to discover a bright and open main floor with gorgeous Open-to Below with both a formal living room and a cozy family roomâ€”ideal for entertaining and everyday living. A gorgeous spiral staircase adds an elegant focal point, while recent upgrades such as new flooring and fresh paint bring a modern, refreshed look throughout the home.

The large, well-appointed kitchen is a dream for any home chef, complemented by a separate spice kitchen for additional cooking space. A main floor den with a window offers flexibility as a home office or guest bedroom, conveniently located near a full three-piece bathroom. Upstairs, the luxurious primary suite features a walk-in closet and a spacious 5-piece en-suite. A second master bedroom includes its own private 3-piece en-suite, while two additional generously sized bedrooms share a 4-piece bathroom. A loft area provides extra living spaceâ€”perfect for a reading nook, play area, or study zone. The Basement



features a 2 Bedroom Legal suite with 1.5 Bath as well as 1 Bedroom illegal suite, both with its own separate kitchen and a shared laundry. Do not miss the golden opportunity to own this one of a kind home in the heart of Saddleridge!!

Built in 2013

### **Essential Information**

MLS® #	A2212881
Price	\$1,325,000
Bedrooms	8
Bathrooms	6.00
Full Baths	5
Half Baths	1
Square Footage	3,398
Acres	0.12
Year Built	2013
Type	Residential
Sub-Type	Detached
Style	2 Storey
Status	Active

### **Community Information**

Address	150 Saddlelake Grove Ne
Subdivision	Saddle Ridge
City	Calgary
County	Calgary
Province	Alberta
Postal Code	T3J 0N8

### **Amenities**

Parking Spaces	5
Parking	Double Garage Attached
# of Garages	2

### **Interior**

Interior Features	Ceiling Fan(s), Central Vacuum
-------------------	--------------------------------

Appliances	Dishwasher, Dryer, Electric Stove, Gas Water Heater, Refrigerator, Washer, Washer/Dryer
Heating	Forced Air
Cooling	Central Air
Fireplace	Yes
# of Fireplaces	1
Fireplaces	Family Room, Gas, Stone
Has Basement	Yes
Basement	Exterior Entry, Full, Suite

## Exterior

Exterior Features	Other
Lot Description	Corner Lot
Roof	Asphalt Shingle
Construction	Stone, Stucco
Foundation	Poured Concrete

## Additional Information

Date Listed	April 17th, 2025
Days on Market	3
Zoning	R-G

## Listing Details

Listing Office	PREP Realty
----------------	-------------

Data is supplied by Pillar 9â„¢ MLSÂ® System. Pillar 9â„¢ is the owner of the copyright in its MLSÂ® System. Data is deemed reliable but is not guaranteed accurate by Pillar 9â„¢. The trademarks MLSÂ®, Multiple Listing ServiceÂ® and the associated logos are owned by The Canadian Real Estate Association (CREA) and identify the quality of services provided by real estate professionals who are members of CREA. Used under license.